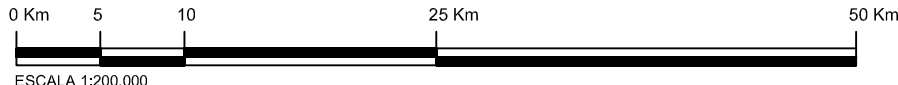
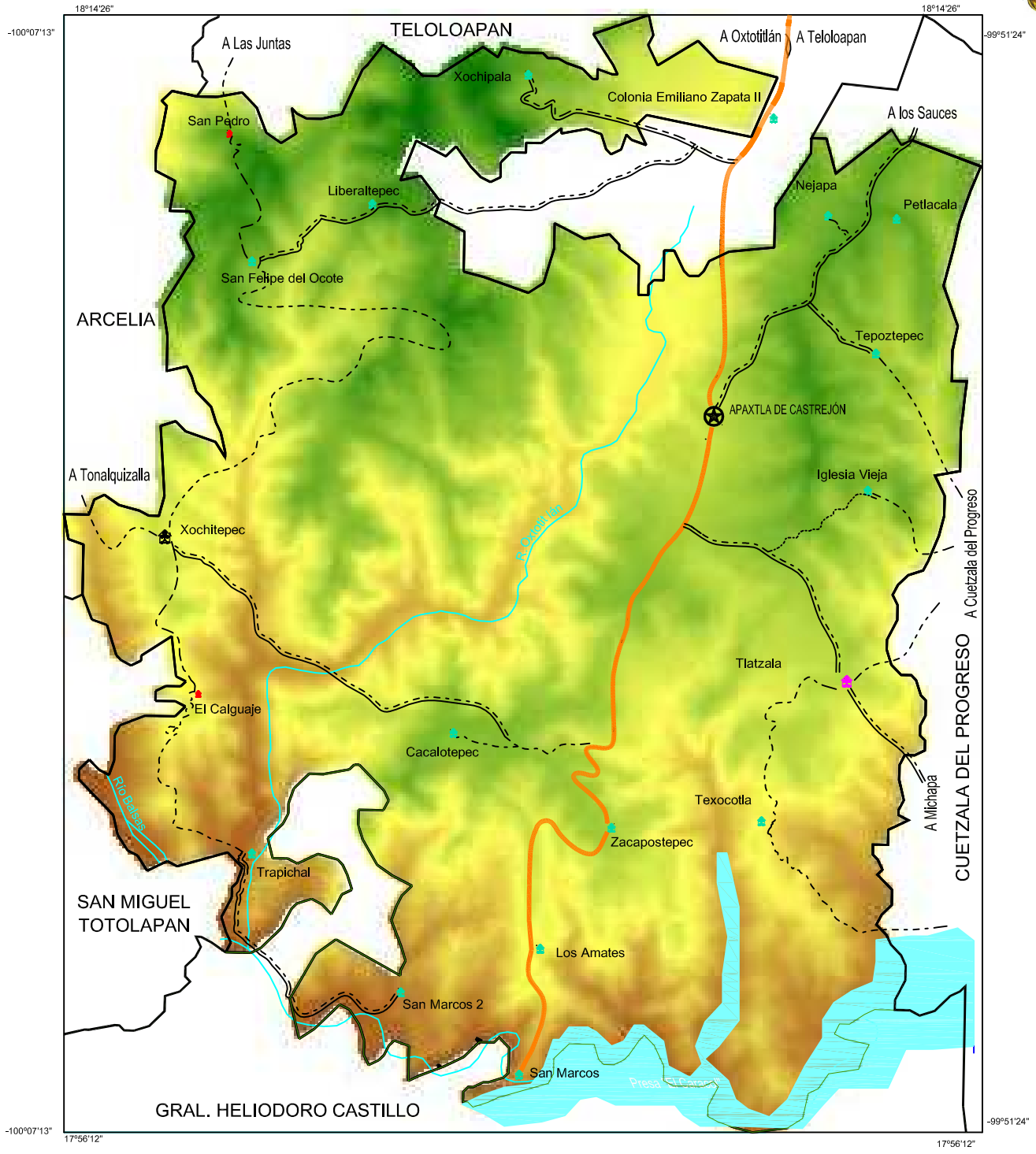
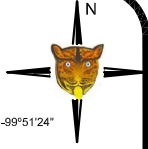


APAXTLA



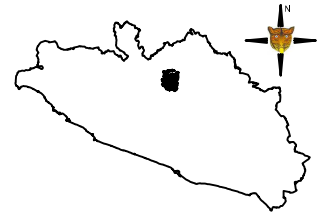
SIMBOLOGÍA

- CARRETERA**
- PAVIMENTADA ESTATAL ————
 - REVESTIDA ————
 - TERRACERÍA ————
 - BRECHA - - - - -

- POBLADOS POR NÚMERO DE HABITANTES**
- DE 50 A 100 ———— ●
 - DE 101 A 500 ———— ●
 - DE 501 A 1000 ———— ●
 - MAYORES A 1000 ———— ●
 - CABECERA MUNICIPAL ———— ●

- RANGO DE ELEVACIONES (msnm)**
- 0001 A 0500 ————
 - 0500 A 1000 ————
 - 1000 A 1500 ————
 - 1500 A 2000 ————
 - 2000 A 2500 ————
 - 2500 A 3000 ————
 - MAYOR A 3000 ————
- RIO** ————
- PRESA** ————

APAXTLA C-006



-100°07'13"

17°56'12"

17°56'12"

-99°51'24"

18°14'26"

18°14'26"

-100°07'13"

-99°51'24"

GRAL. HELIODORO CASTILLO